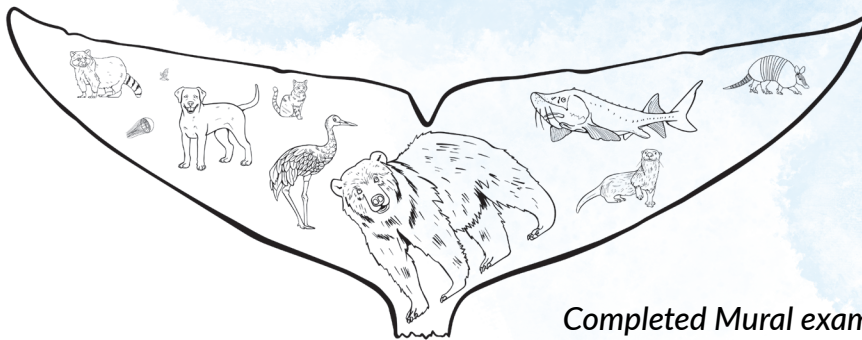


# FIN-TASTIC FUN! BLUE WHALE TAIL MURAL ACTIVITY

## Overview:

Blue whales are the largest animals ever to have lived. They can grow up to 100 feet long and weigh as much as 150 tons. Blue whales use their powerful tails to propel themselves across thousands of miles of ocean. In this activity, participants will be able to experience exactly how big a blue whale's tail can grow by working together to create a life-sized mural. This activity works well as a passive program or facilitated program.



Completed Mural example

## Target Age:

Family, Multigenerational, Pre-K, Early Elementary, Upper Elementary, Tweens (9-12), Teens, Adults

## Prep Time:

1 hour

## Activity Duration:

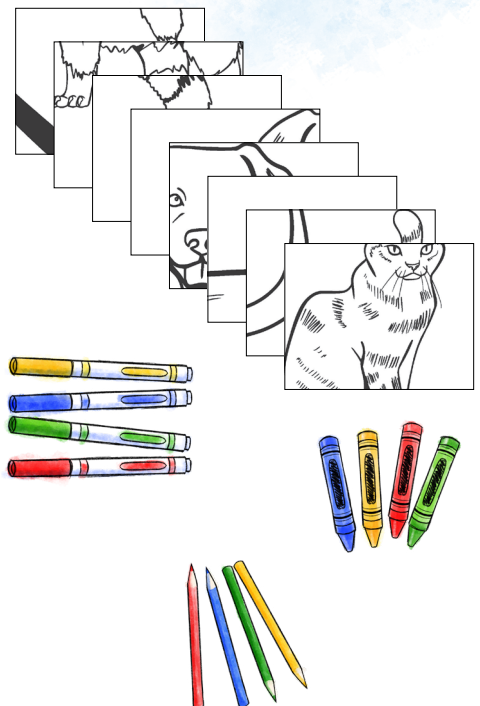
20-40 minutes, passive

## Perfect for:

Open space indoors, libraries, unused hallways

## Materials and Set-Up:

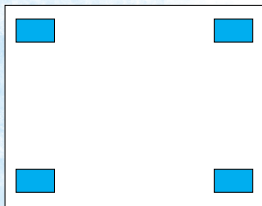
- Flat wall space of at least 26ftx10ft (*pick a space with room to place tables for coloring stations*)
- Printer
- 2 copies of the printed [blue whale tail mural](#)
- Double-sided-tape
  - ✦ Double-sided-tape works well so the sheets don't have to be taped up immediately. If double-sided tape doesn't work for your wall space you can try:
    - ✦ Reusable adhesive (Blue Tack)
    - ✦ Painters tape
- Crayons, markers, and/or colored pencils
- Layout instructions (*included in this activity guide*)



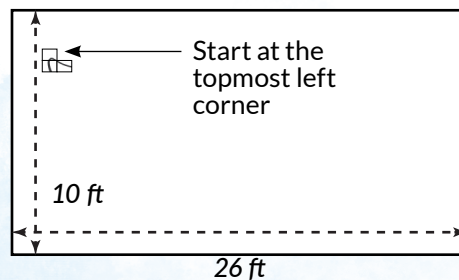
# FIN-TASTIC FUN! INSTRUCTIONS

1. Measure out the 26ft x 10ft wall space needed for the printed mural.
2. Print out the mural file. Ensure your printer settings are set to "actual size" so your masterpiece comes out just right. No shrinking or enlarging allowed!
3. Stick a piece of double-sided tape to each corner of each page. Be sure to keep the pages in order so there is no confusion when placing on the wall later.
4. Take the printed pages and layout instructions to your designated wall space.
5. Peel off the backing of the tape on the first page and place it on the topmost left corner of the wall. Our mural journey has officially begun!
6. The layout instructions are written row by row. Keep placing the mural up according to the instructions until the very last row.
7. Set up a colorful corner with crayons, markers, and another copy of the printed blue whale tail mural pages. Let your library guests unleash their inner artists and create their own mini-masterpieces to place on top of the mural. Let's turn that mural into a sea of creativity!

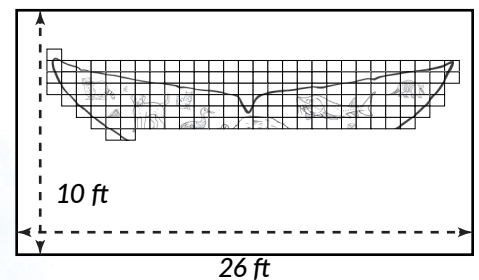
Step 3: Tape placement example



Step 5: Mural starting placement

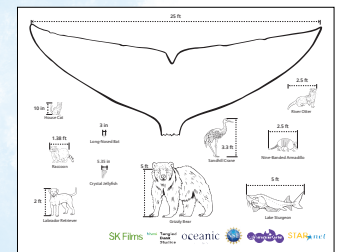
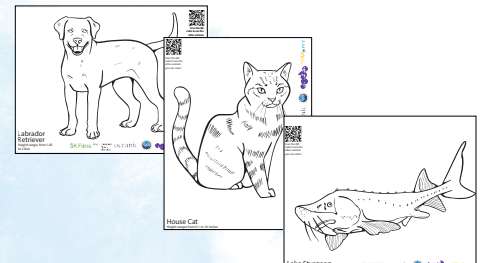


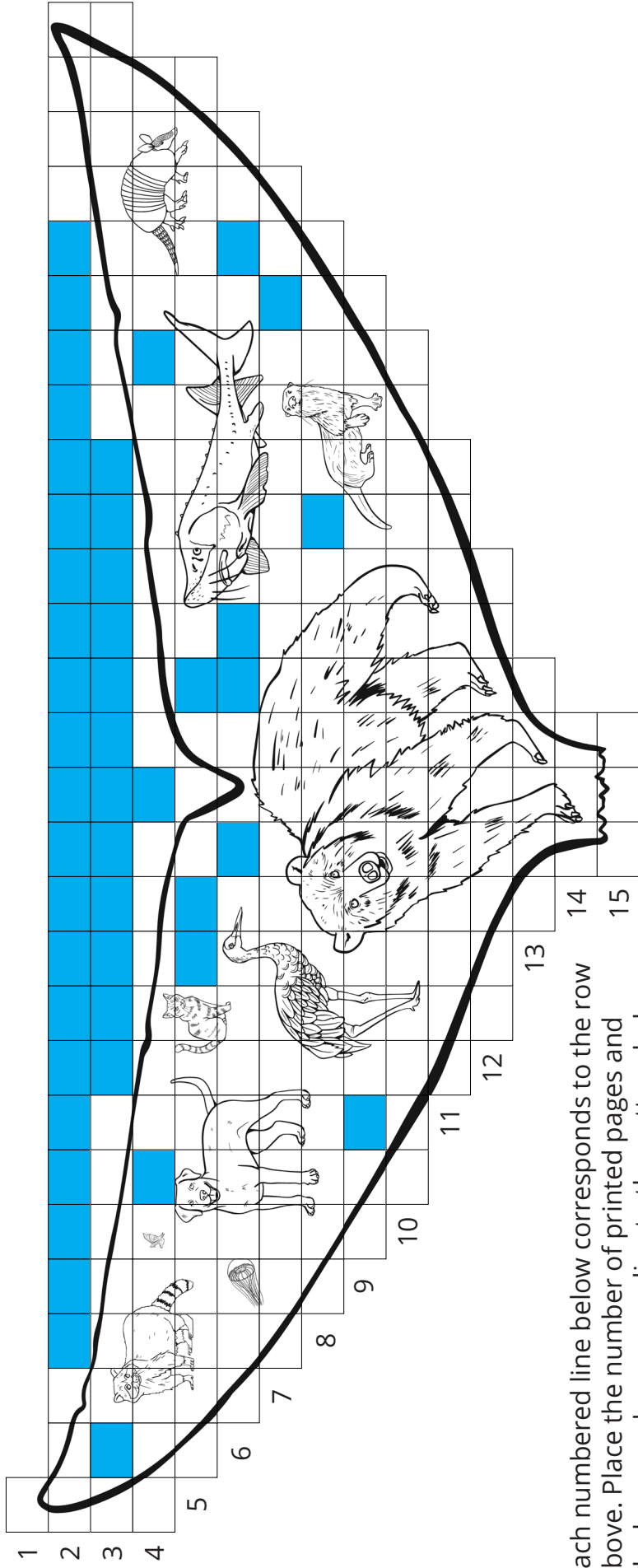
Step 6: Mural layout in progress



## Extension Activities:

- What if patrons don't have enough time to color in the animal they want? Offer them a [single-page animal](#) to take home.
- Have patrons guess how big an animal is compared to the 25ft blue whale tail. They can check their answers against the [measurements page](#) offered.
- Want to make this a more engaging activity? Let patrons draw their own animal on the blank pages within the printed blue whale tail mural. Ask them to look up the size of the animal. Would it fit on the blank pages? Does it go past the pages so they can only draw a small portion of it? Encourage them to look at sources within the library.





Each numbered line below corresponds to the row above. Place the number of printed pages and blank pages down according to the pattern below. The blue rectangles represent the blank pages.

1. 1 printed, continue to next row
2. 3 printed, 21 blank, 4 printed
3. 1 printed, 1 blank, 6 printed, 12 blank, 8 printed
4. 6 printed, 1 blank, 6 printed, 1 blank, 7 printed, 1 blank, 5 printed
5. 9 printed, 2 blank, 3 printed, 1 blank, 11 printed
6. 10 printed, 1 blank, 2 printed, 2 blank, 6 printed, 1 blank, 2 printed
7. 19 printed, 1 blank, 2 printed
8. 14 printed, 1 blank, 5 printed
9. 2 printed, 1 blank, 15 printed
10. 16 printed
11. 12 printed
12. 9 printed
13. 5 printed
14. 3 printed
15. 3 printed

# LAYOUT INSTRUCTIONS